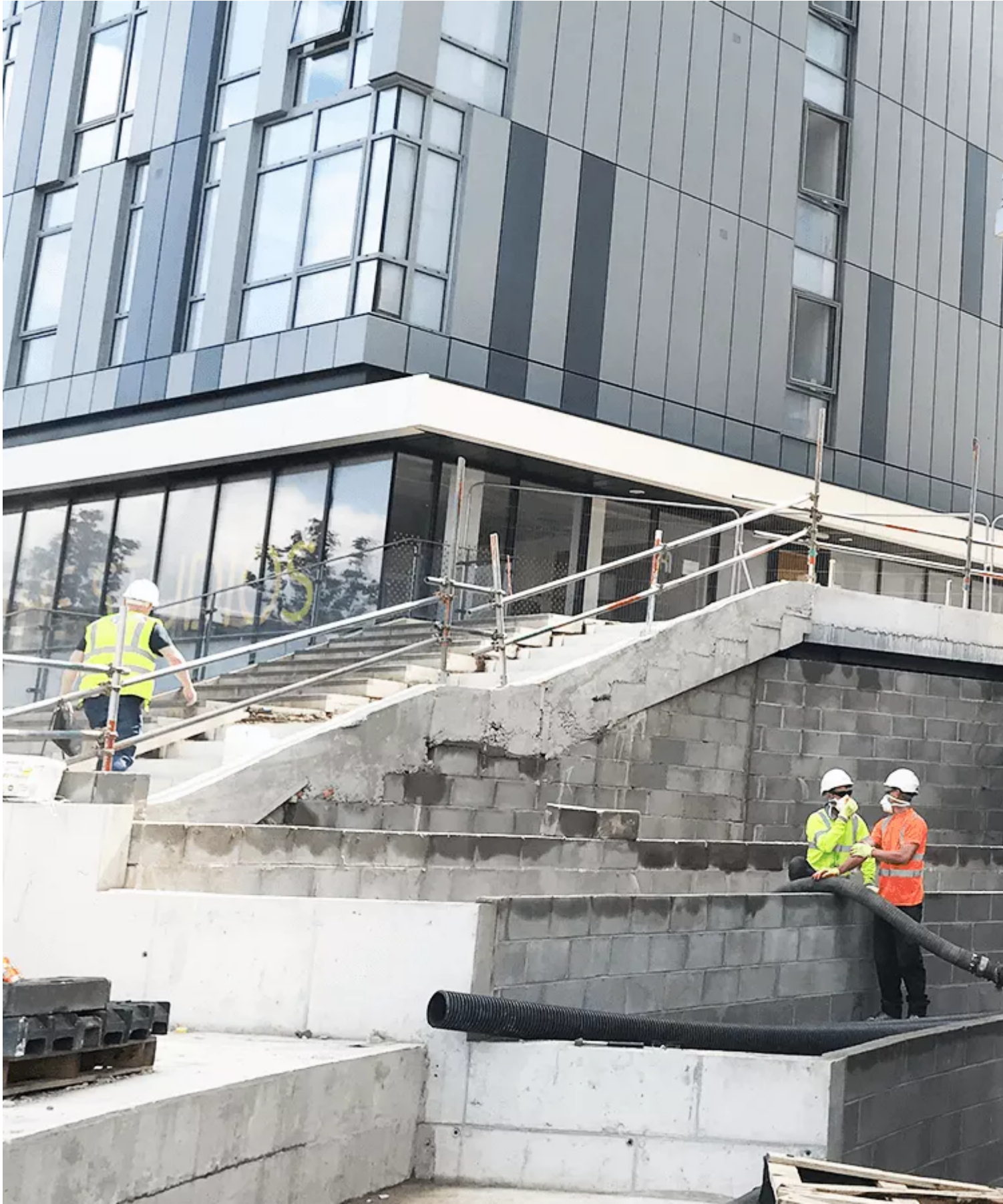




LIVERPOOL ALBERT DOCK - GREEN PLANTERS



LECA® LWA was specified for garden planters at the entrance of a new development in Liverpool facing the world famous Albert Dock. The aim of the development was to add aesthetically pleasing horticultural features at the entrance of the apartment – adding a colourful and visually stunning entrance for the

residents.

LECA® LWA was installed to act as a lightweight substitute for soil for newly built planters on front of the new iconic apartment development by the Vermont Group. LECA® LWA is only one seventh the density of traditional crushed fill and freer draining than soil, this provided the development with a lighter, easier to handle solution for the developers.

FACTS

Amount of material: 60m³ of [LECA® LWA \(10-20mm\)](#)

Interesting Fact: The differing depths of the planters which at its deepest reached depths of 15 feet meant that the pneumatic delivery provided through the agile pneumatic delivery piping proved to be the most effective solution.

Delivery Method: Pneumatic Delivery